




Ramses MSC

Console Control System

Software upgrade guide



Authorized
distributor **DVD**  **DSD** **DXD**
© 2004 Merging Technologies

 **MERGING**
MERGING TECHNOLOGIES

No part of this documentation may be reproduced in any form whatsoever or be stored in any data retrieval system without prior written permission of the copyright owners.

This documentation is supplied on an as-is basis. Information contained within this documentation is subject to change at any time without notice and must not be relied upon.

All company and product names are TM or Registered Trademarks ® of their respective owners.

Merging Technologies makes no warranties express or implied regarding this software, its quality, performance, merchantability or fitness for a particular purpose. The software is supplied "as is" you, the purchaser, are assuming the entire risk of the results of using this Merging Technologies software.

Merging Technologies manufacturers importers or dealers shall not be liable for any incidental damages including personal injury or any other damages caused by improper use or operation of the hardware or software.

In no circumstances will Merging Technologies, its owners, directors, officers, employees or agents be liable to you for any consequential, incidental or indirect loss or damages including loss of time, loss of business, loss of profits, loss of data or similar resulting from the use of or inability to use the Merging Technologies hardware and or software or for any defect in the hardware software or documentation.

© Copyright Merging Technologies Inc. 2007. All rights reserved

Ramses MSC Software Upgrade Guide : Contents

Upgrade Procedure	5
Terminology	5
Scope	5
Availability	5
Software and Firmware Upgrades	6
Files	6
Method 1 Install using a USB stick	6
Method 2 Install from a Network Location	6
Upgrade Procedure	7
Software	7
Edit Bay Sets	16
Firmware	28
Mapping a Network Drive	31
Removing a Mapped Network Drive	41

Ramses MSC

Software upgrade guide

PRELIMINARY

Document number: 08-04

Date: 22-August-2007

For Ramses Console Software V1.5.1 and above

Upgrade Procedure

Terminology

Iggy	= Name of Ramses software application and interface shown on Active Screen
Versions	= Software
Firmware	= For programming Hardware (flash)
Sets	= Edit Bay Mappings

Scope

This document details the process of installing new software (and firmware).

Note: This procedure only applies to Ramses MSC consoles running V1.5.1 software and above.

All versions of software and firmware installed are also kept in an archive. This enables users to downgrade or upgrade to different versions of Ramses MSC Console software and firmware at will.

Note: all console software and firmware can be deleted from the list at any time and re-imported at a later stage.

Availability

Ramses MSC Console software and firmware updates are available for download from the Merging Technologies website.

www.merging.com/ramses/download/

Alternatively, contact your Merging Technologies sales partner.



Software and Firmware Upgrades

Software upgrades are distributed as .zip files. Firmware upgrades are distributed as .bin files.

Files

There are two software files. These are named according to these conventions:

- Consolesoft 1.5.3.3032 2007.07.09 rms .zip
- Consolesoft 1.0.0.140 2007.05.07 monitor .zip

The single Firmware file named according to this convention:

- Consolefirm 1.5.2.31 2007.04.04 .bin

and the Edit Bay Set files are named according to this convention:

- Consolesoft set1 2007.08.21 1452 rms.zip

These can be installed using one of two methods:

Method 1 Install using a USB stick

Copy the files onto a USB stick. Insert the USB stick into a USB socket on the rear of the console. Then follow the Upgrade Procedure below.

Method 2 Install from a Network Location

Users who have their engines connected to a LAN may upgrade by simply placing the software .zip file into a remote network location. Then follow the Upgrade Procedure below.

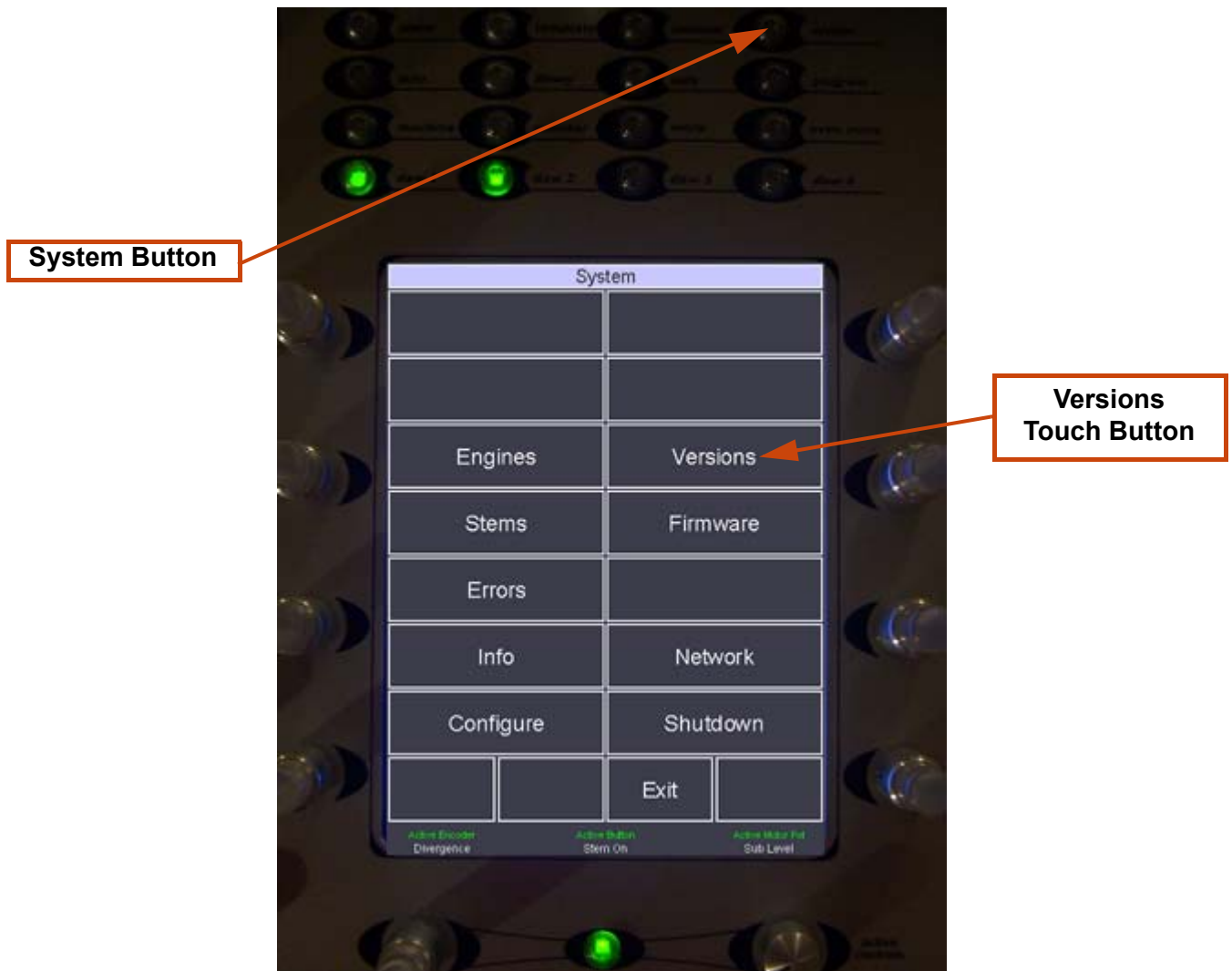
Note: The console must first have been correctly set up to 'see' a mapped network drive.
(If necessary please see: **Mapping a Network Drive on page 31**).

This provides an extremely rapid and convenient method of updating software.

Upgrade Procedure

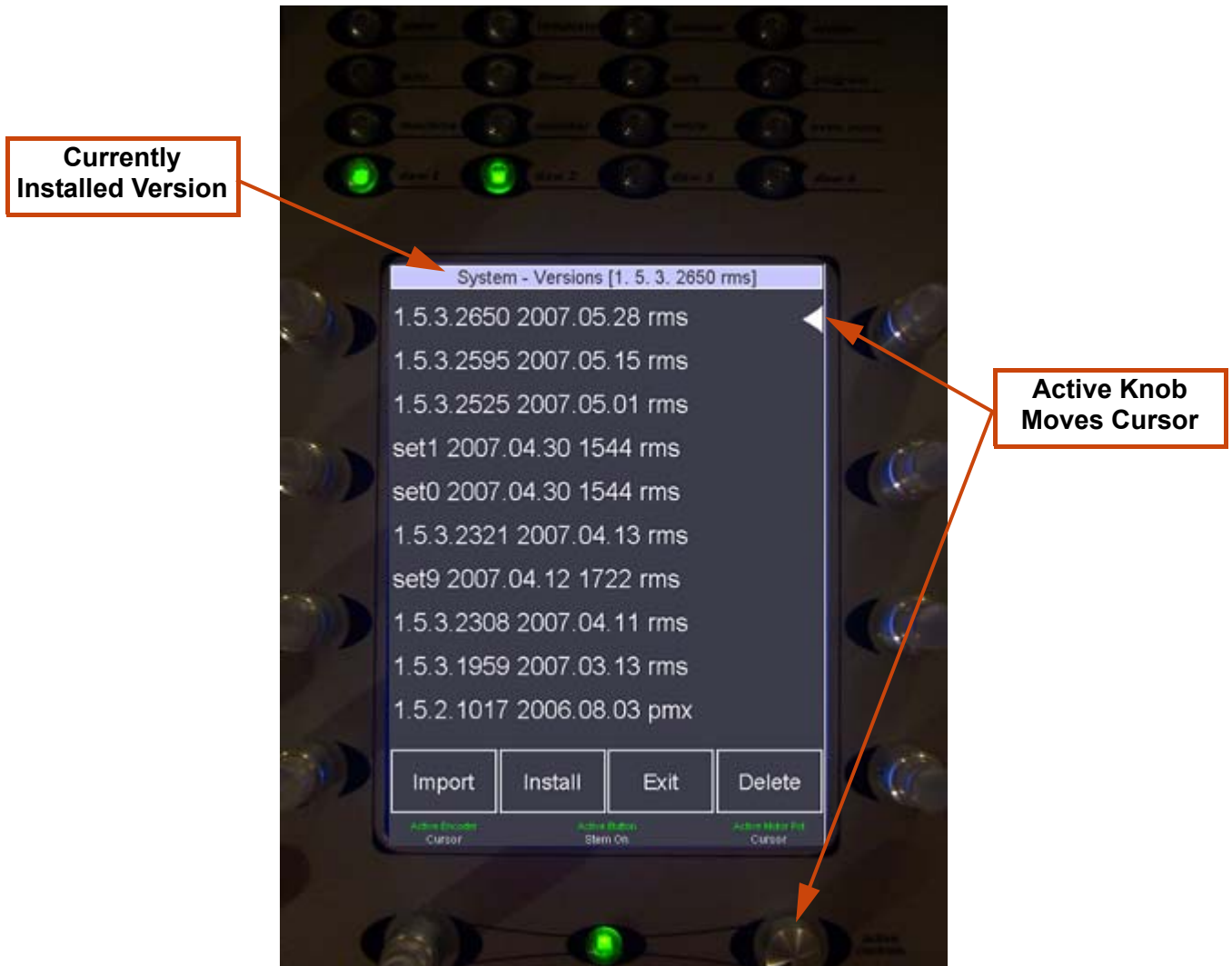
Software

1. Copy the new Software files onto a **USB Memory Stick** or **Mapped Network Drive**.
2. If using the USB Stick method, plug this stick into a USB port on the rear panel of your Ramses MSC-Console.
3. If not already running, start your console as per normal.
4. Press the **System** Button near the top of the **Active Panel** and then touch the **Versions** Touch Button.



5. You should now see all the available software **Versions** ready to be installed

Note: Software **Versions** have an **.rms** extension..



Notice that the currently installed version number is highlighted at the top of the screen.

6. Press the **Import** Touch button to **Import** a new Version from a USB Stick (or Network location)

New Software Versions

0 on CDROM
1 on removable drive(s)
0 on mapped network folder(s)
Import all ?

Confirm

Exit

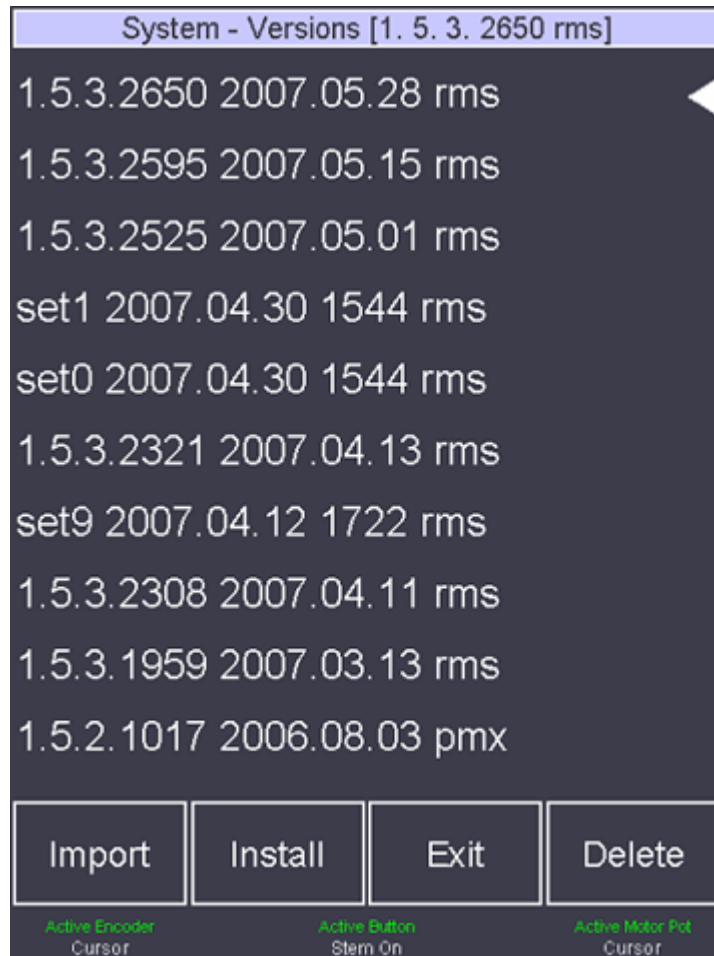
Active Encoder
Divergence

Active Button
Stem On

Active Motor Pot
Sub Level



7. Press the **Confirm** Touch Button to Import all available Versions. The Imported Version(s) will now be shown in the list:



8. Turn the **Active Knob** (beneath the **Active Screen**) until the Arrow Cursor is next to the desired ConsoleSoft **x.x.x.xxxx. 20xx.xx.xx rms** file version.

9. Press the **Install** Touch Button.

Confirm Install New Version

Current version :
1. 5. 3. 2650

New version :
1.5.3.2650 2007.05.28 rms

Install new version ?

Proceed

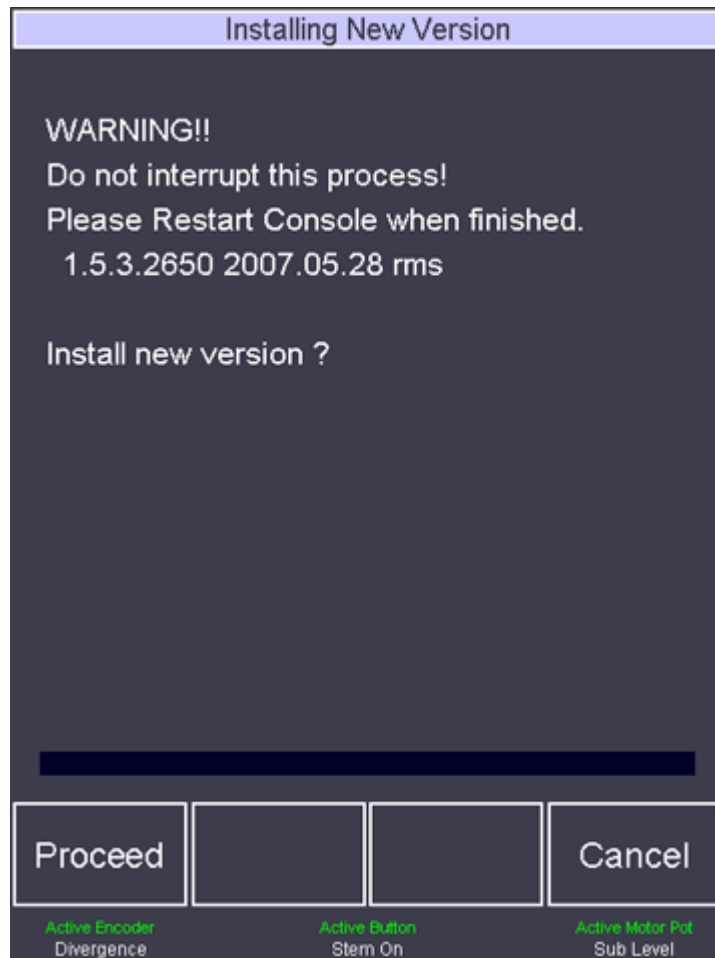
Cancel

Active Encoder
Divergence

Active Button
Stem On

Active Motor Pot
Sub Level

10. Press the **Proceed** Touch Button to Confirm that you wish to Install a different **Version**

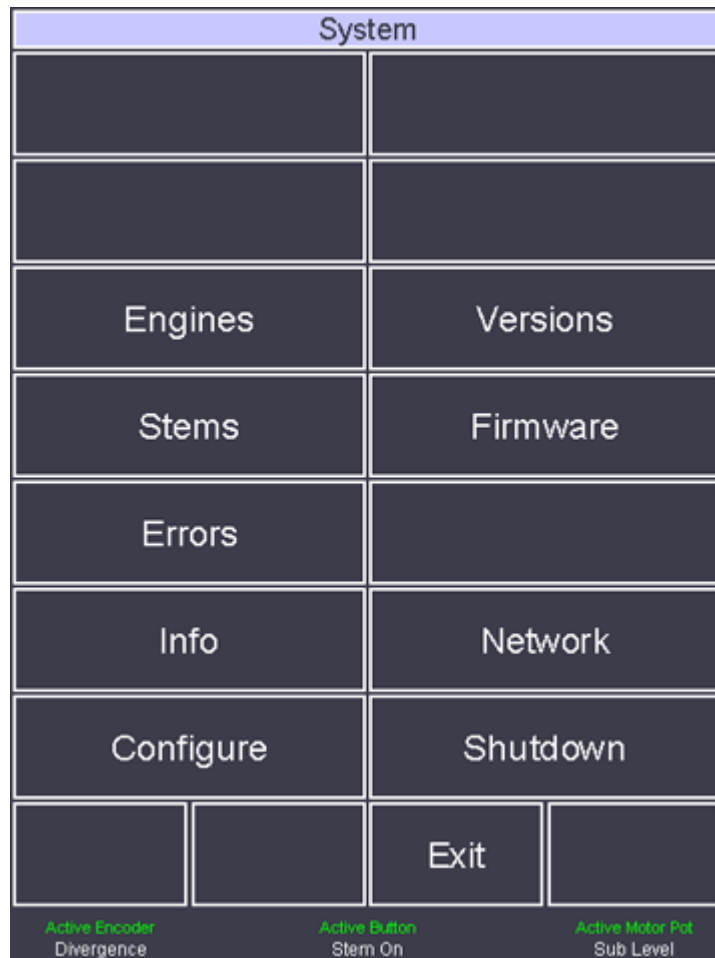


Note: The process will take a few seconds.

11. At the end of the the process the display reverts to the **System - Versions** screen:



12. Press the **Exit** Touch Button to return to the root **System** screen.



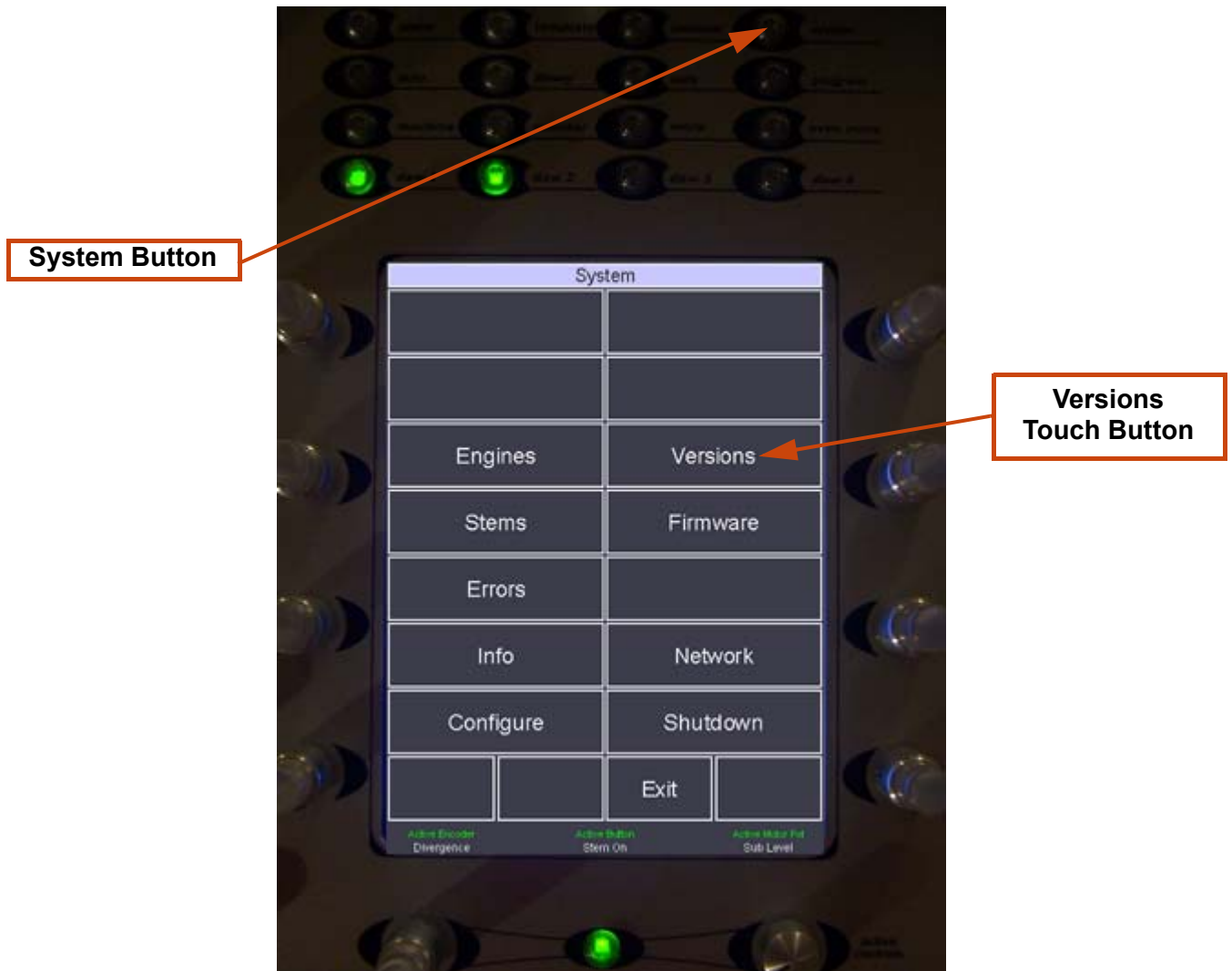
13. Press the **Engines** Touch Button

System - Engines			
A	Pyramix		
Restart		Exit	
Active Encoder Divergence	Active Button Stem On	Active Motor Pot Sub Level	

14. Select **Pyramix** (if not already highlighted) and press the **Restart** Touch Button to restart Iggy

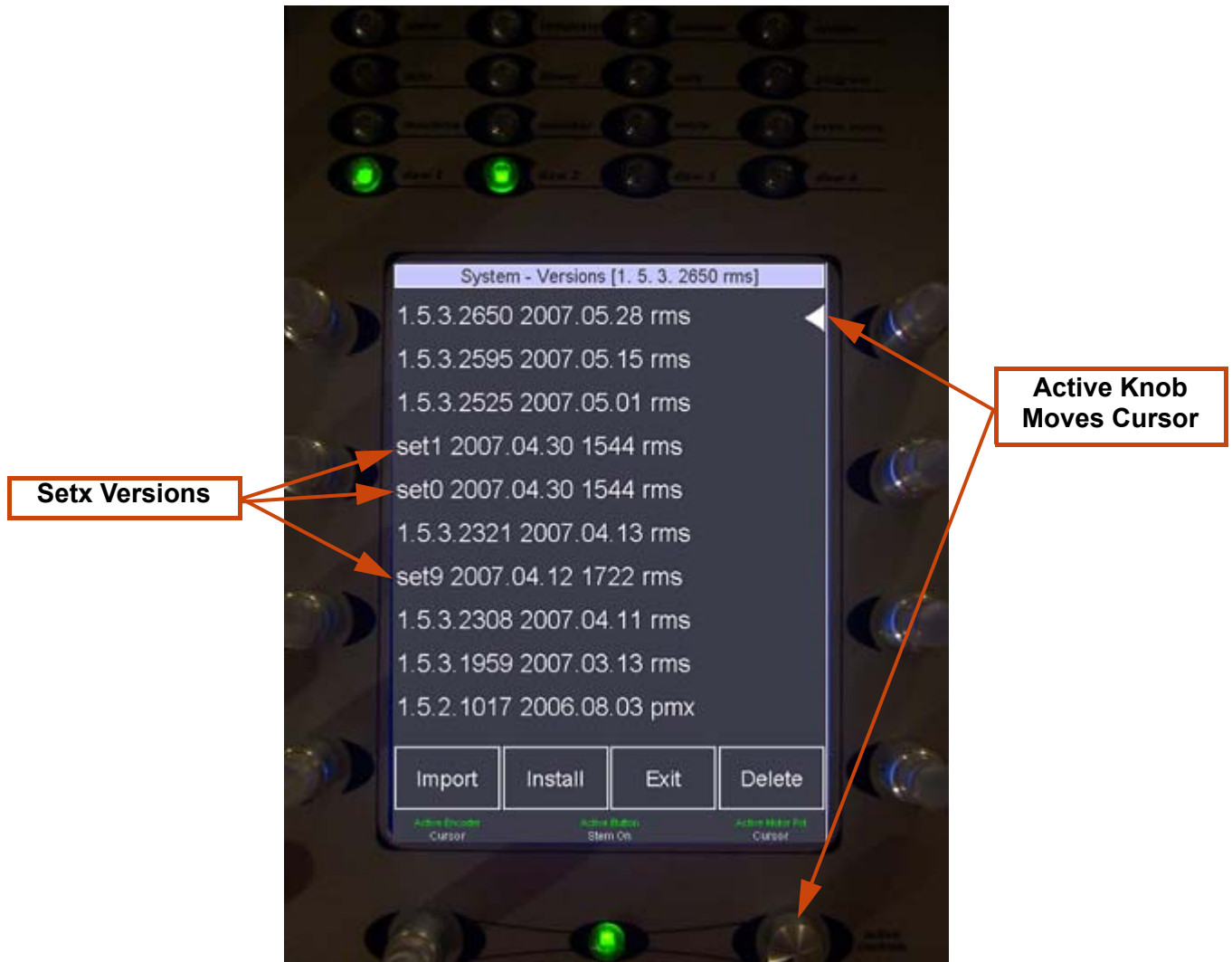
Edit Bay Sets

1. Copy the new Software files onto a **USB Memory Stick** or **Mapped Network Drive**.
2. If using the USB Stick method, plug this stick into a USB port on the rear panel of your Ramses MSC-Console.
3. If not already running, start your console as per normal.
4. Press the **System** Button near the top of the **Active Panel** and then touch the **Versions** Touch Button.



5. You should now see all the available software **Versions** ready to be installed

Note: Edit Bay Sets **Versions** have an **.rms** extension and **setx** prefix..



6. Press the **Import** Touch button to **Import** a new Version from a USB Stick (or Network location)

New Software Versions

0 on CDROM
1 on removable drive(s)
0 on mapped network folder(s)
Import all ?

Confirm

Exit

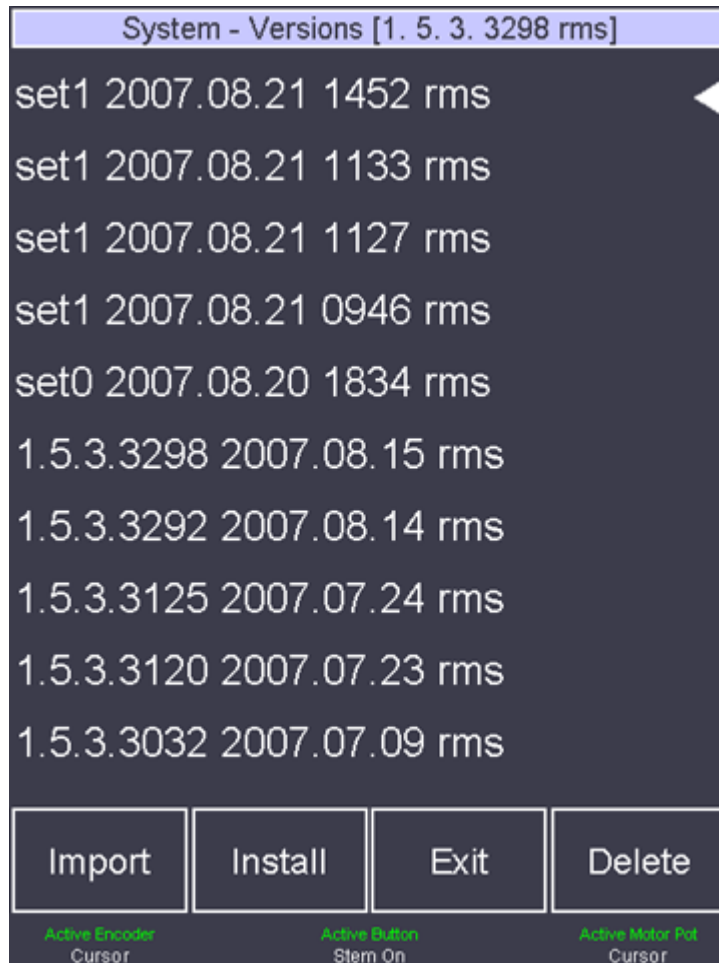
Active Encoder
Divergence

Active Button
Stem On

Active Motor Pot
Sub Level



7. Press the **Confirm** Touch Button to Import all available Versions. The Imported Version(s) will now be shown in the list:



8. Turn the **Active Knob** (beneath the **Active Screen**) until the Arrow Cursor is next to the desired ConsoleSoft **setx 20xx.xx.xx rms** file version.

9. Press the **Install** Touch Button. The **Confirm Install New Version** screen appears:

Confirm Install New Version

Current version :
1. 5. 3. 3298

New version :
set1 2007.08.21 1452 rms

Install new version ?

Proceed

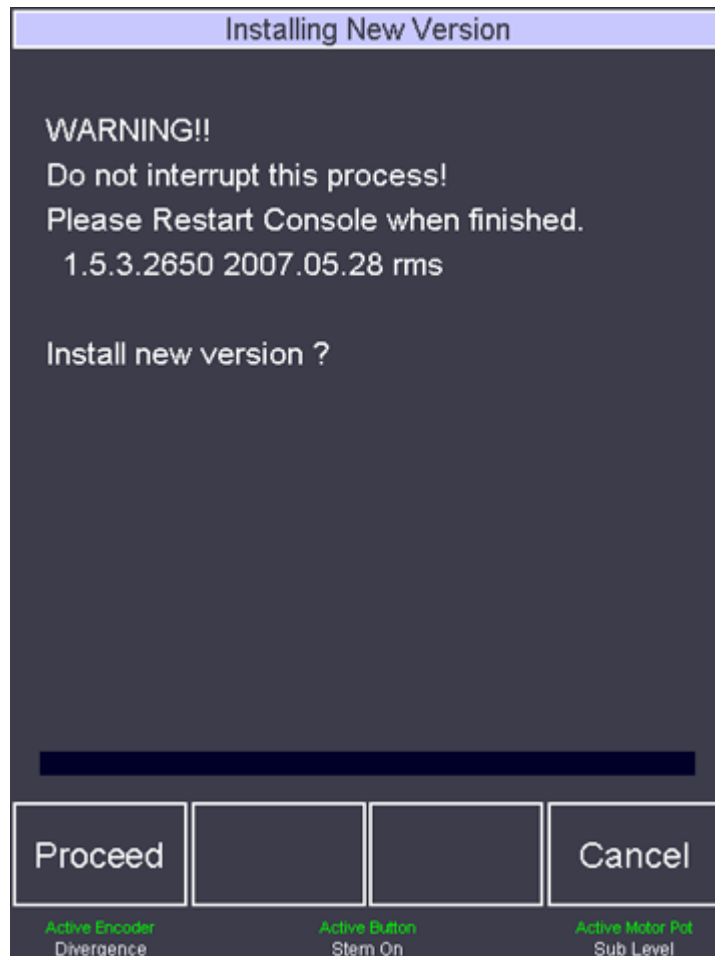
Cancel

Active Encoder
Divergence

Active Button
Stem On

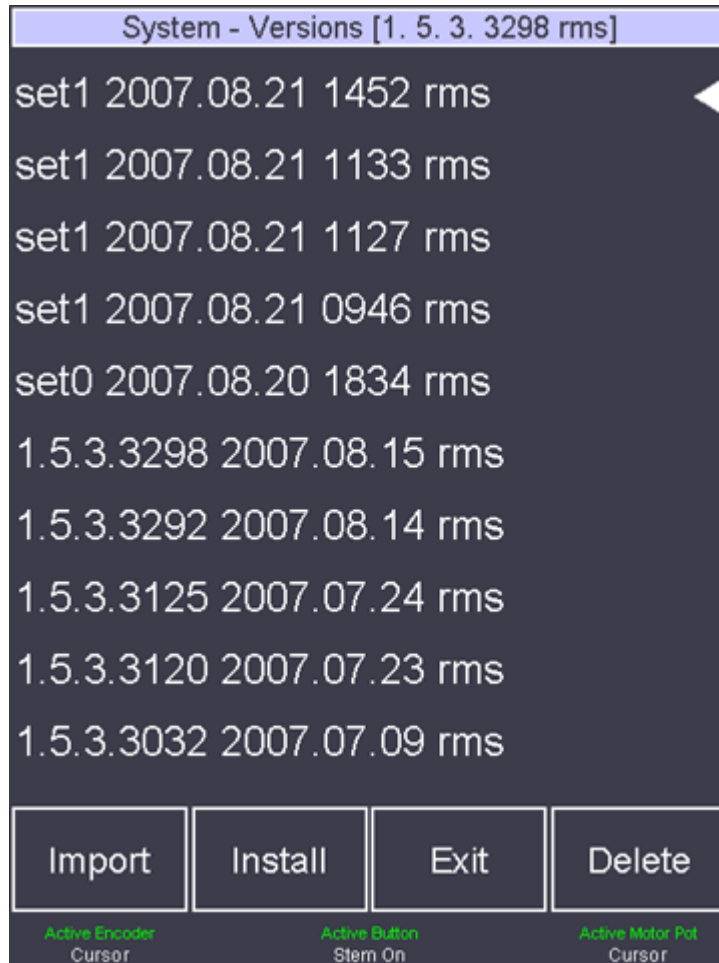
Active Motor Pot
Sub Level

10. Press the **Proceed** Touch Button to Confirm that you wish to Install a different Set **Version**



Note: The process will take a few seconds.

11. At the end of the the process the display reverts to the **System - Versions** screen:

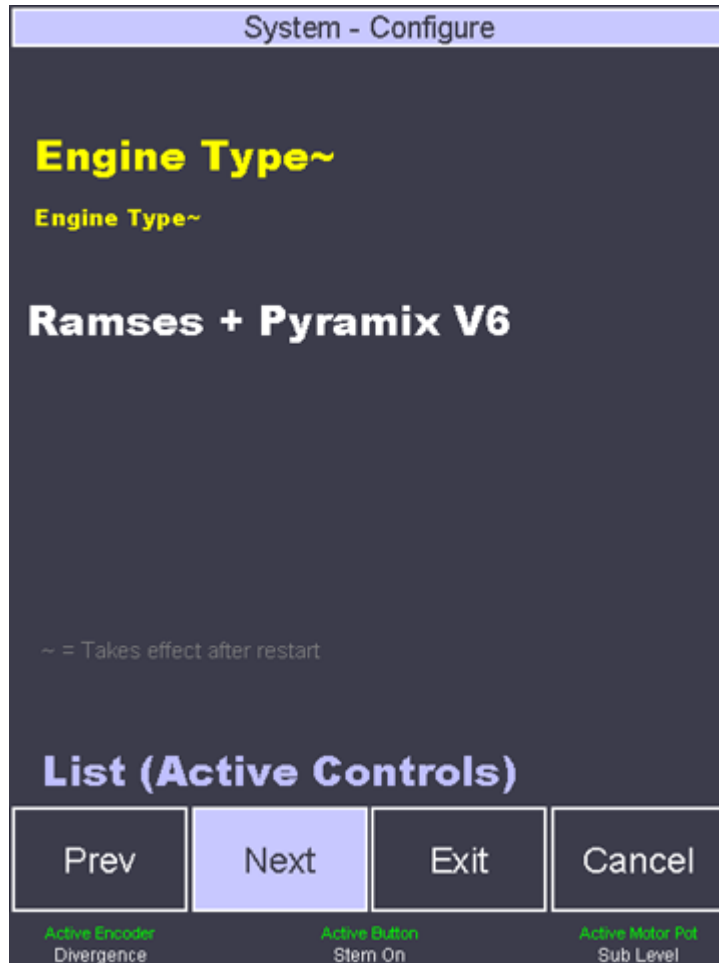




12. Press the **Exit** Touch Button to return to the root **System** screen.

System			
Engines		Versions	
Stems		Firmware	
Errors			
Info		Network	
Configure		Shutdown	
		Exit	
Active Encoder Divergence		Active Button Stem On	Active Motor Pot Sub Level

13. Press the **Configure** Touch Button to enter the **Configuration** pages:



Note: The **System - Configure** page you actually see will depend on the page last viewed.

14. Navigate in the **Configure** Page using the **Next** button until you reach the **Edit Bay Configuration** page:



15. To activate the newly installed **Set**, make sure that the **Edit Bay Configuration** is set to **1**. If this is not the case then use the **Active** button to set it to **1**.

Note: **0** is the default Ramses **Set** and bypasses the currently installed **Set**.

16. Press the **Save** Touch Button to save the change (if any) and to return to the root **System** screen..

System			
Engines		Versions	
Stems		Firmware	
Errors			
Info		Network	
Configure		Shutdown	
		Exit	
Active Encoder Divergence	Active Button Stem On	Active Motor Pot Sub Level	



17. Press the **Engines** Touch Button

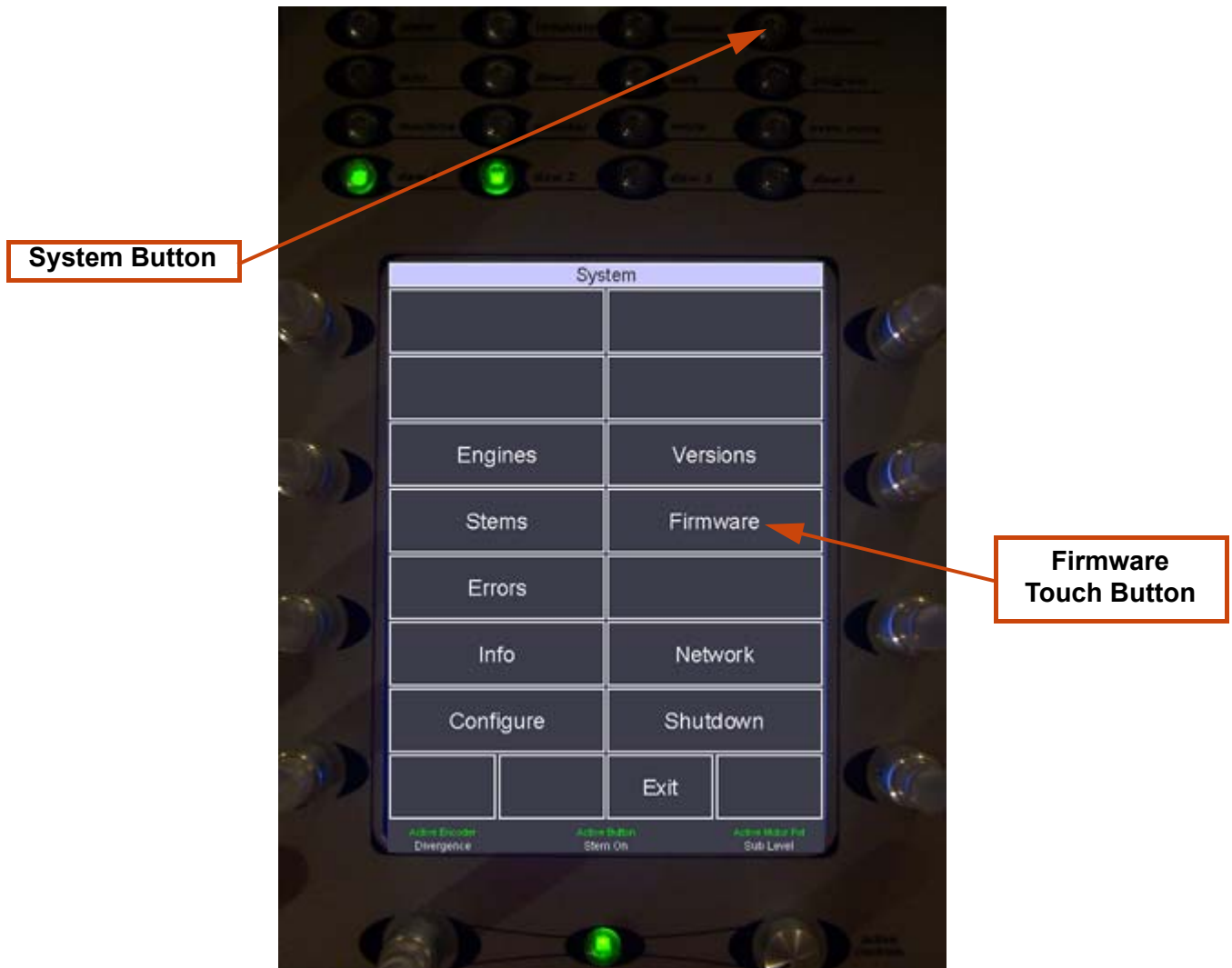
System - Engines			
A	Pyramix		
Restart		Exit	
Active Encoder Divergence	Active Button Stem On	Active Motor Pot Sub Level	

18. Select Pyramix (if not already highlighted) and press the **Restart** Touch Button to restart Iggy

Firmware

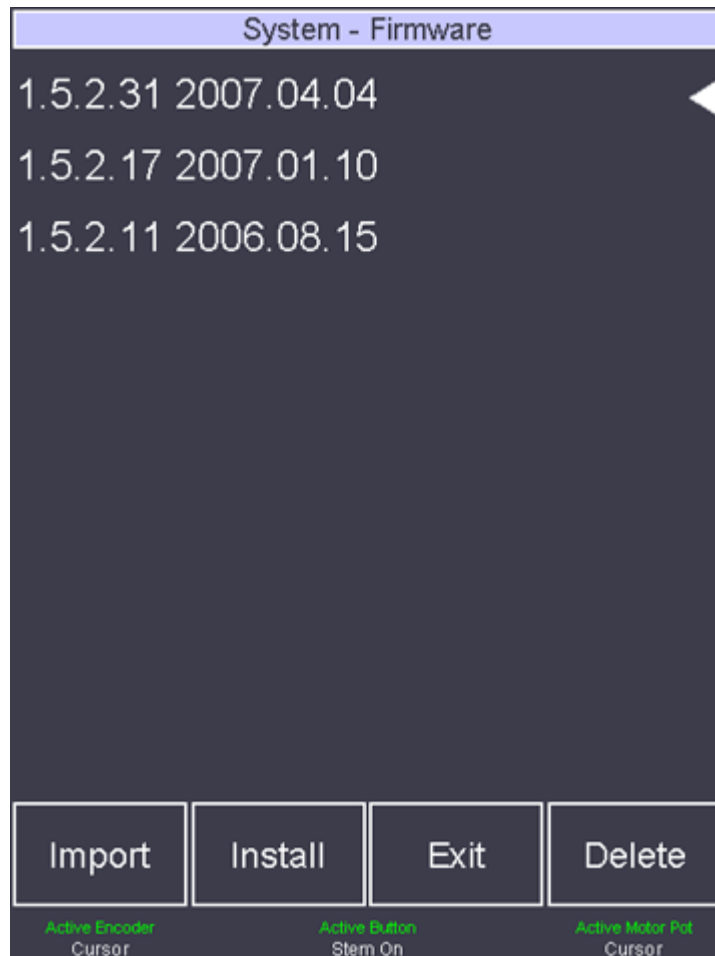
Note: Firmware upgrades should only be undertaken when absolutely necessary. It is imperative that the console is not switched off while firmware is being flashed. Failure to observe this warning may result in damage to your console.

1. Press the **System** Touch Button near the top of the Active **Panel** and then touch the **Firmware** Touch Button.



- You should now see all the available firmware ready to be installed

Note: Firmware revisions appear in the list with NO file extension.



- To import a new Firmware revision press the **Import** Touch Button followed by the **Confirm** Touch Button to import all available firmware.
- Place the cursor next to the desired revision of **Firmware** using the **Active Knob**
- Press the **Install** Touch Button followed by **Overwrite** and then **Confirm** on subsequent screens.

Note: The flash upgrade process can take between 15 and 30 MINUTES

WARNING!!!

**DO NOT SWITCH OFF THE CONSOLE
DURING PROGRAMMING !!!!!!!**

6. Now press the **System** Button



7. Press the **Shutdown** Touch Button followed by **Confirm**. This will shut down the console.
8. Wait 20 seconds
9. Power **On** the console
10. Your Ramses MSC Console is once again ready for use.

Congratulations! – your RAMSES MSC CONSOLE is now ready for use with the new Software and or Firmware.

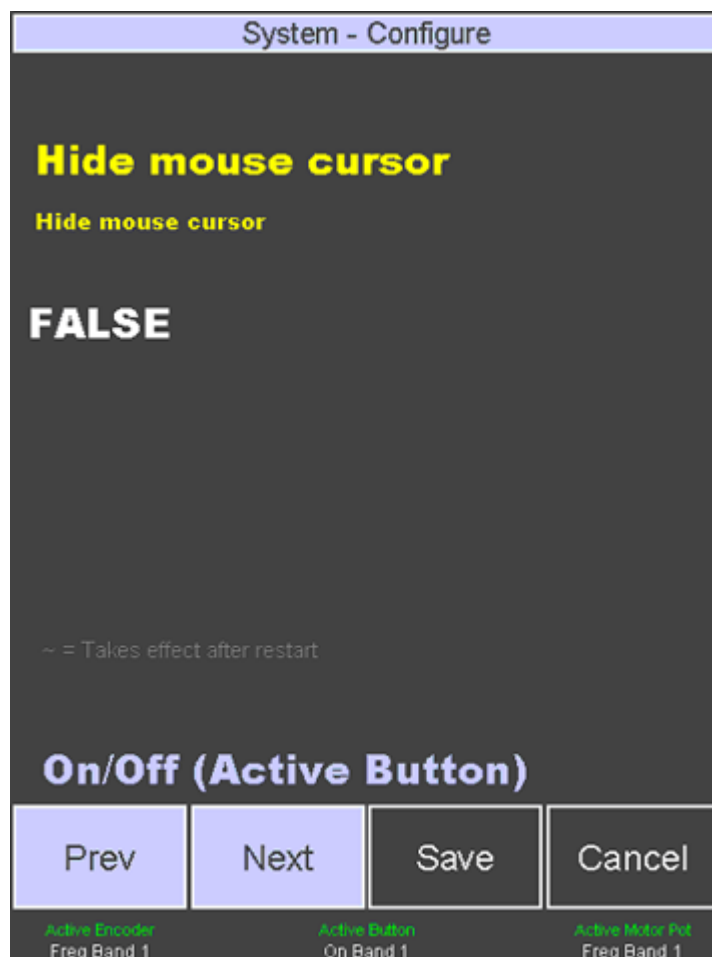
Mapping a Network Drive

Note: This procedure is only required to allow new console software to be imported without using a USB memory stick. If you are not planning to import software over a network, this need not be setup.

In order to be able to install Ramses MSC Console software or firmware from a remote network location, please follow the procedure described below:

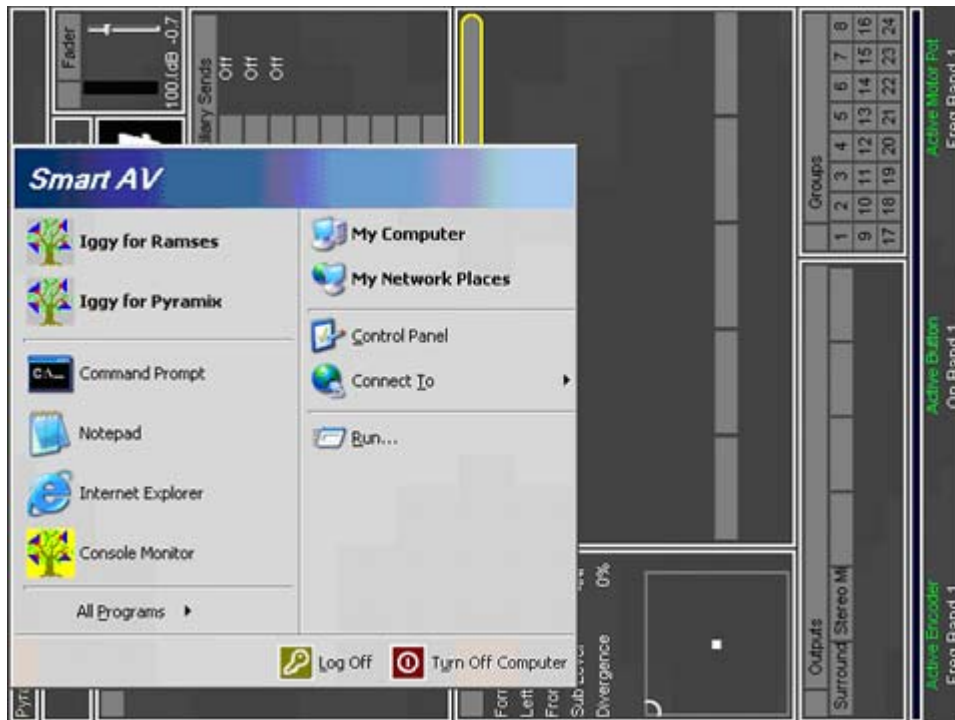
Note: This procedure assumes that you are logged onto the **Iggy** PC as the default user and have all the appropriate rights to access your network.

1. Attach a USB Mouse and Keyboard to the console.
2. Press the **System** button followed by the **Config** Touch Button
3. Use the **Prev** / **Next** Touch Buttons to find the **Hide Mouse cursor** page.



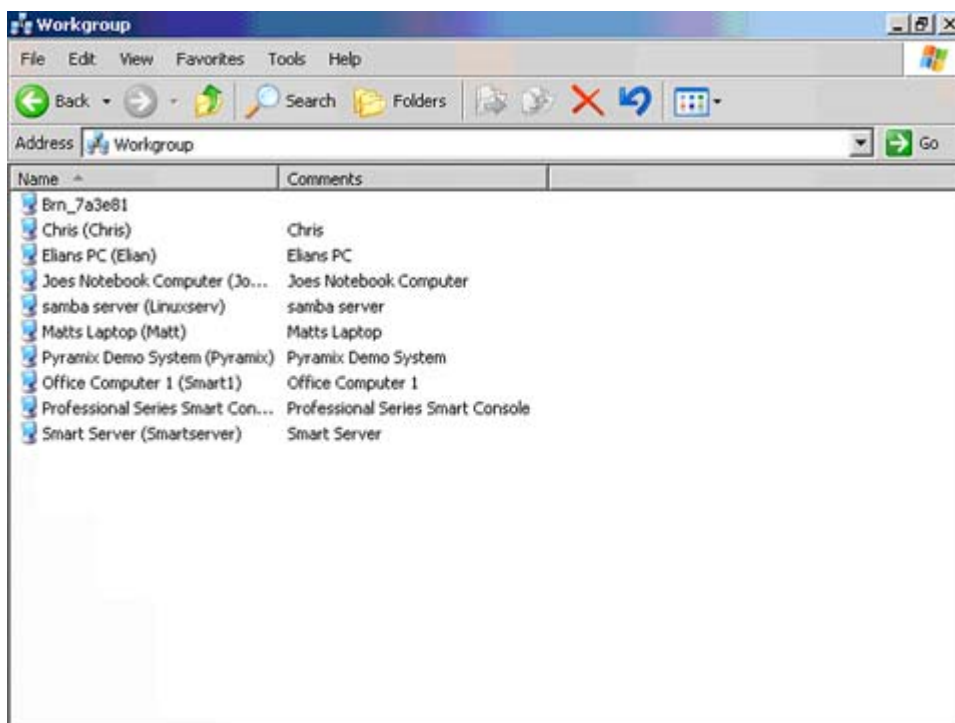
4. Ensure that the **Hide Mouse Cursor** option is set to **FALSE** (If necessary toggle using the **Active Button**)

- Open the Windows **Start Menu** by pressing the **Windows** key on the USB keyboard or **Ctrl + Esc**

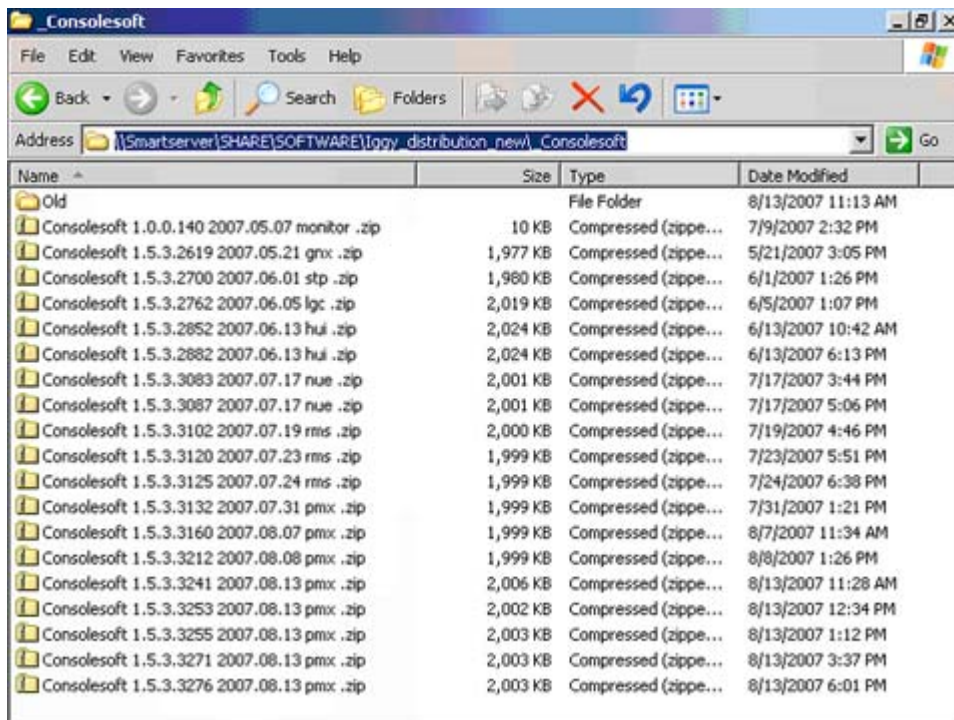


Note: Windows screens are 90 degrees shifted in orientation. This is normal.

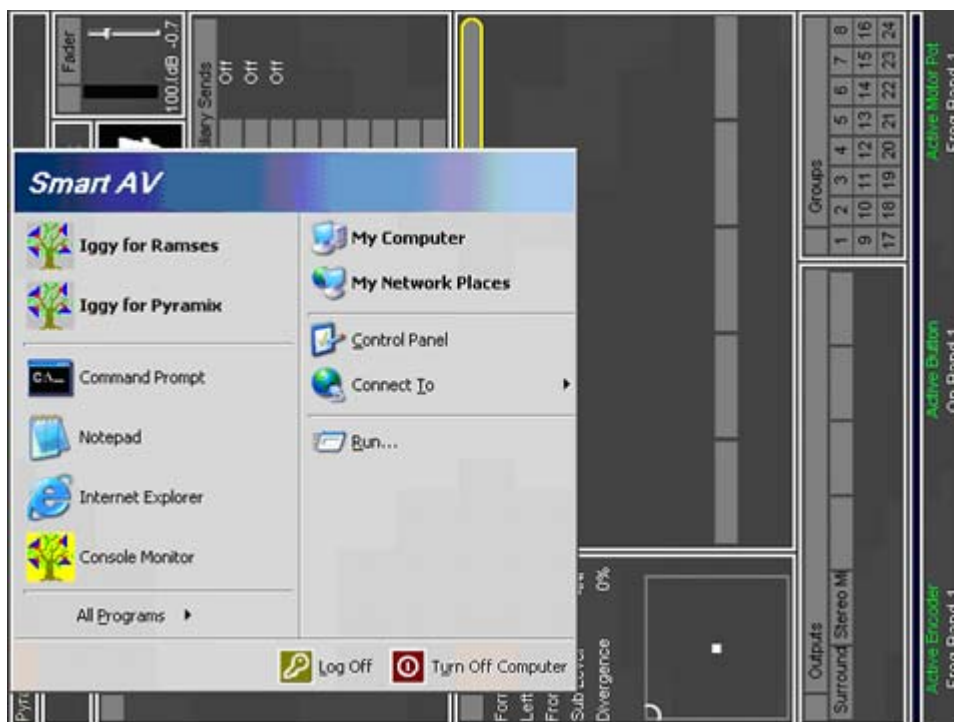
- Open **My Network Places** and browse to your workgroup



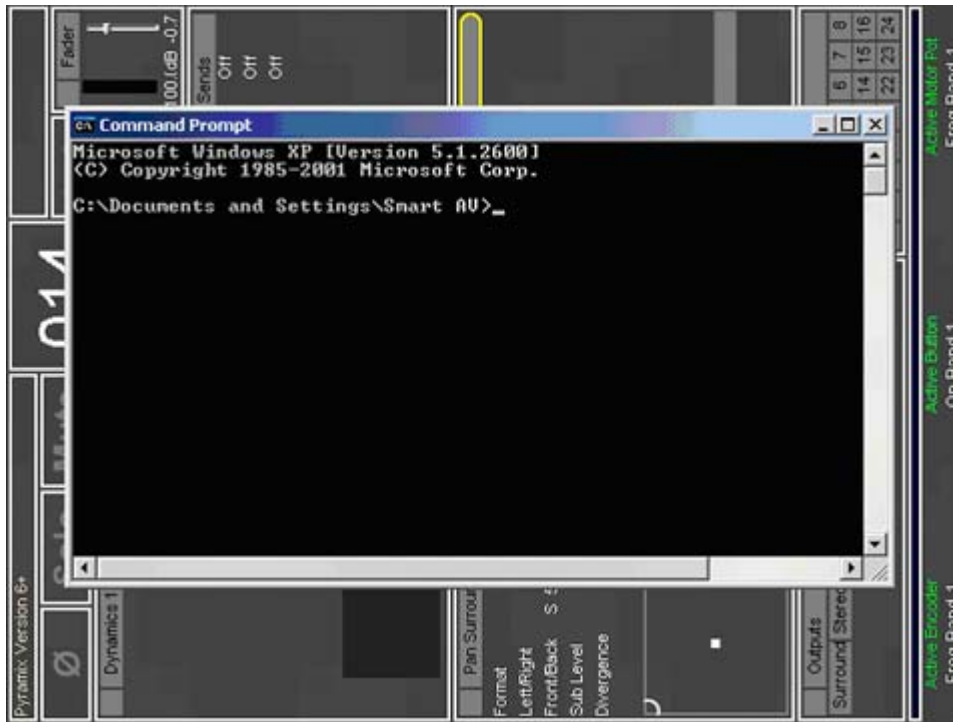
- Browse to the remote Network Folder you want to map as a Network Drive. This is where you would like the console to look for new versions of software and firmware. For example **\\Server\ConsoleSoft**.



- Select the **Network Address** in the **Address Bar** and copy the address into the edit buffer using **Ctrl + C** or selecting **Edit > Copy** from the menu.
- Re-Open the **Start Menu** (**Windows Key** or **Ctrl + Esc**)



10. Open a **Command Prompt** Window



11. Type the following line:

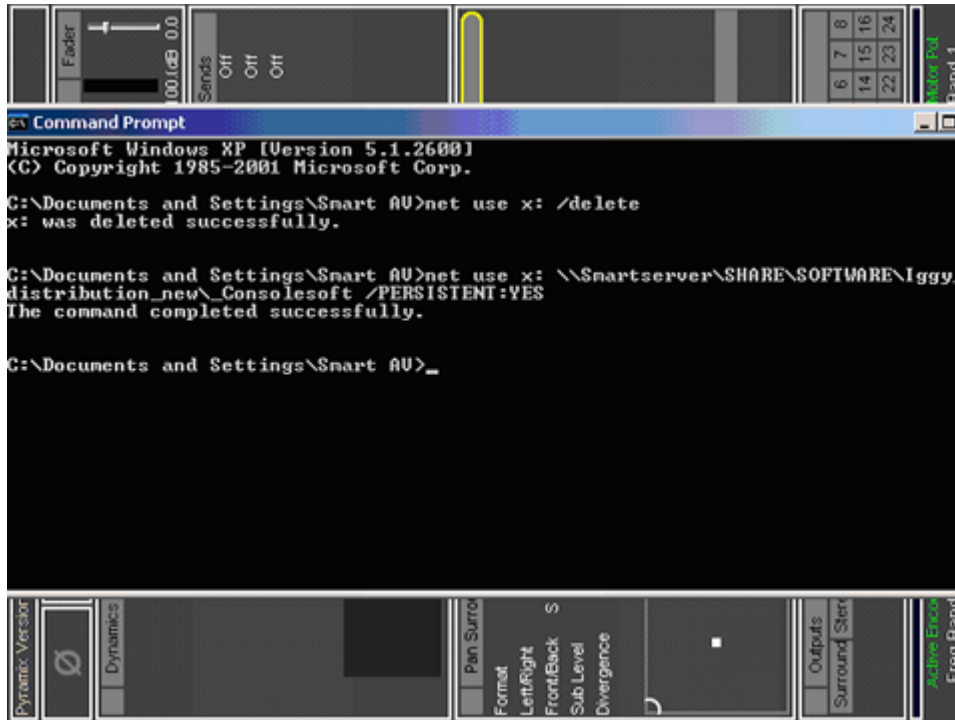
`net use x: \\Servername\Foldername /PERSISTENT:YES` followed by Enter

(\\Servername\Foldername can be added by Pasting (Ctrl + V) the address copied in Step 8 above)

You should then see, The command completed successfully appear in the Command window.

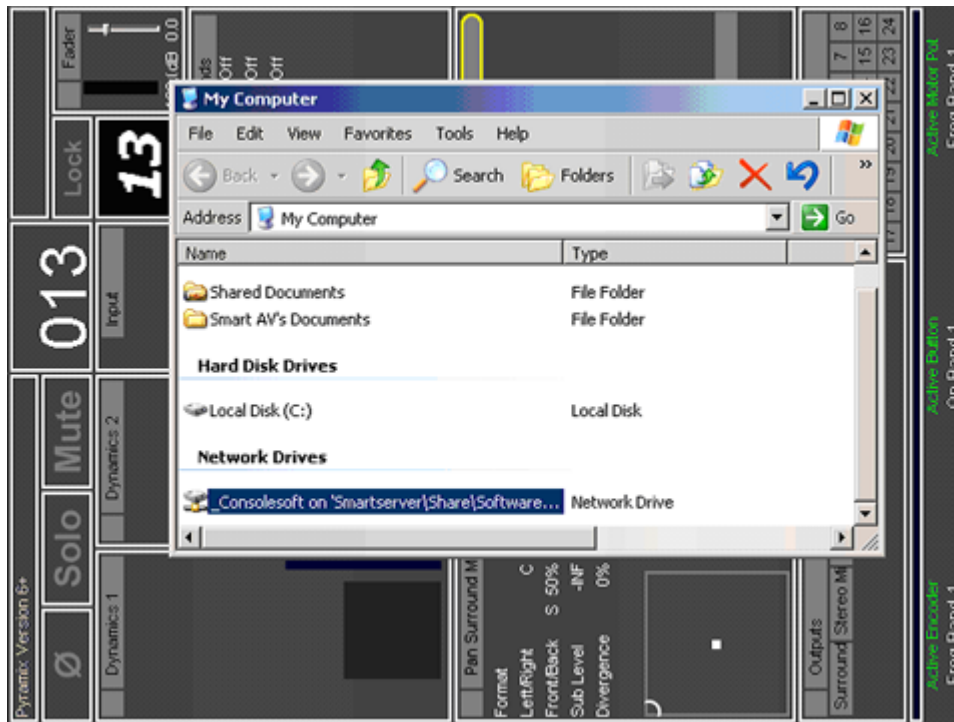
(In our example the exact line is: `net use x: \\Smartserver\SHARE\SOFTWARE\lggy_distribution_Consolesoft /PERSISTENT:YES`)

See the screen shot below:

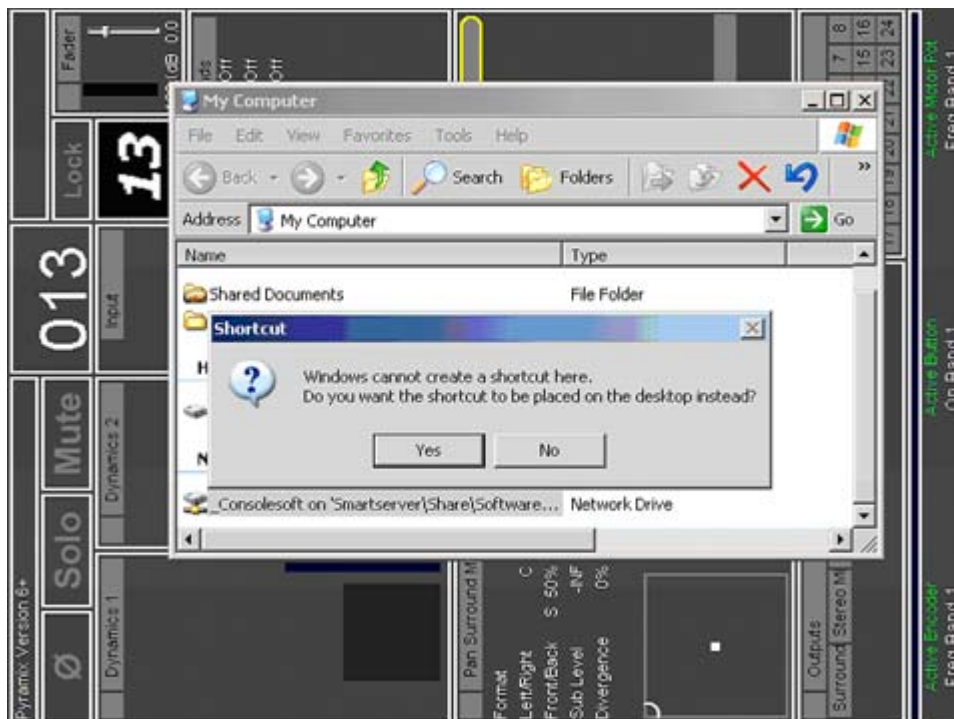


Note: If a **Username** and **Password** is required to access your **Workgroup** then the shared drive may well be disconnected after a Ramses start-up or re-boot. In order to avoid the possibility of this problem occurring please add the Ramses MSC console as a **user** on your server. **Username:** **Smart AV**. There is no password set so please leave the **Password** field blank.

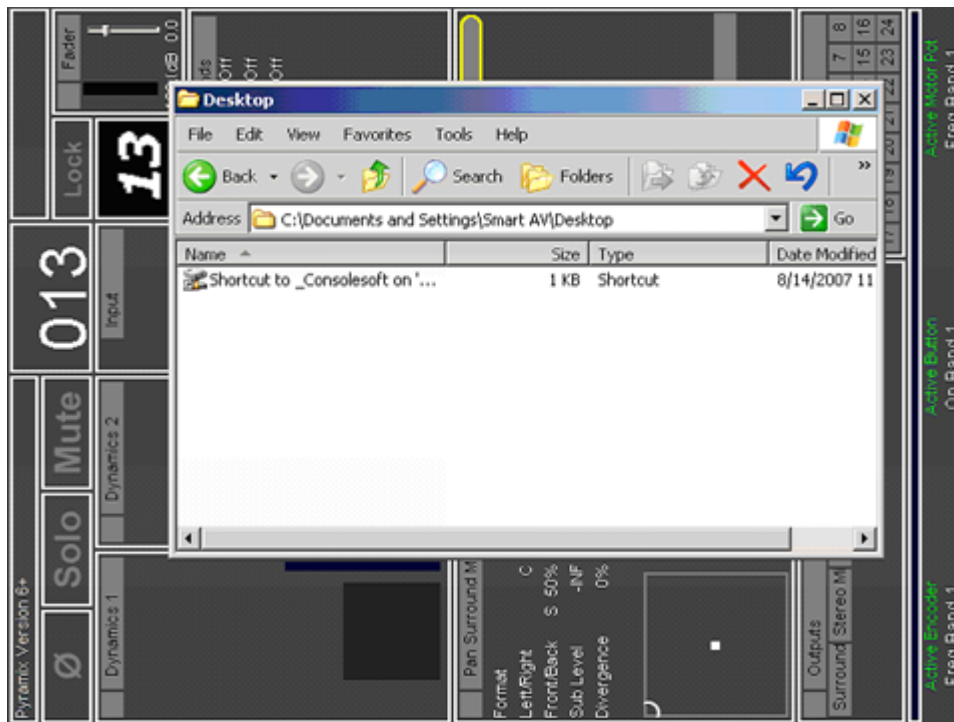
12. Re-open the **Start Menu** (Windows Key or **Ctrl + Esc**) and open **My Computer**



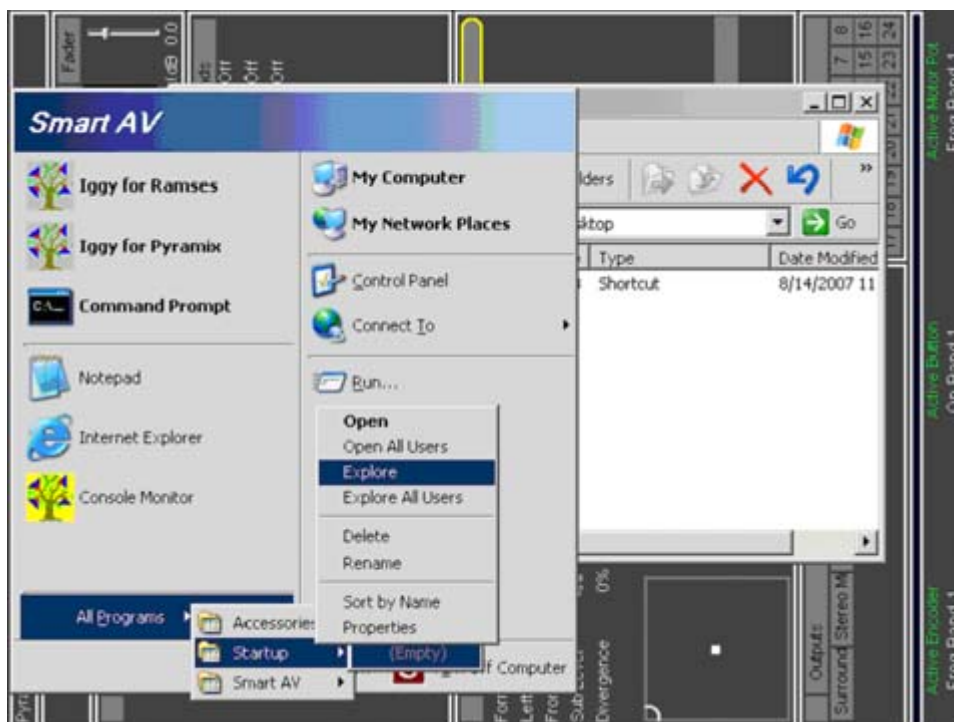
13. Scroll down to find the newly mapped Network Drive. Now, click on it to select it then right-click and choose **Create Shortcut**
14. You will see the following message telling you that **Windows cannot create a shortcut here** and asking if it should be placed on the desktop instead. Click on the **Yes** button



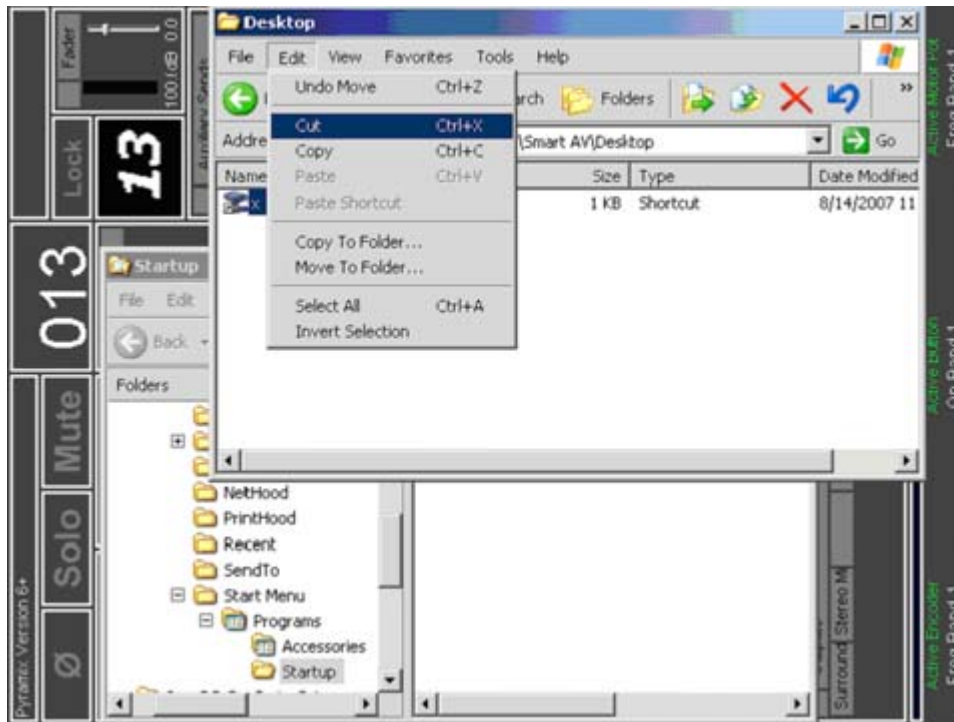
15. Using the open explorer window, navigate to the **Desktop** folder under **C:\Documents and Settings\Smart AV\Desktop**



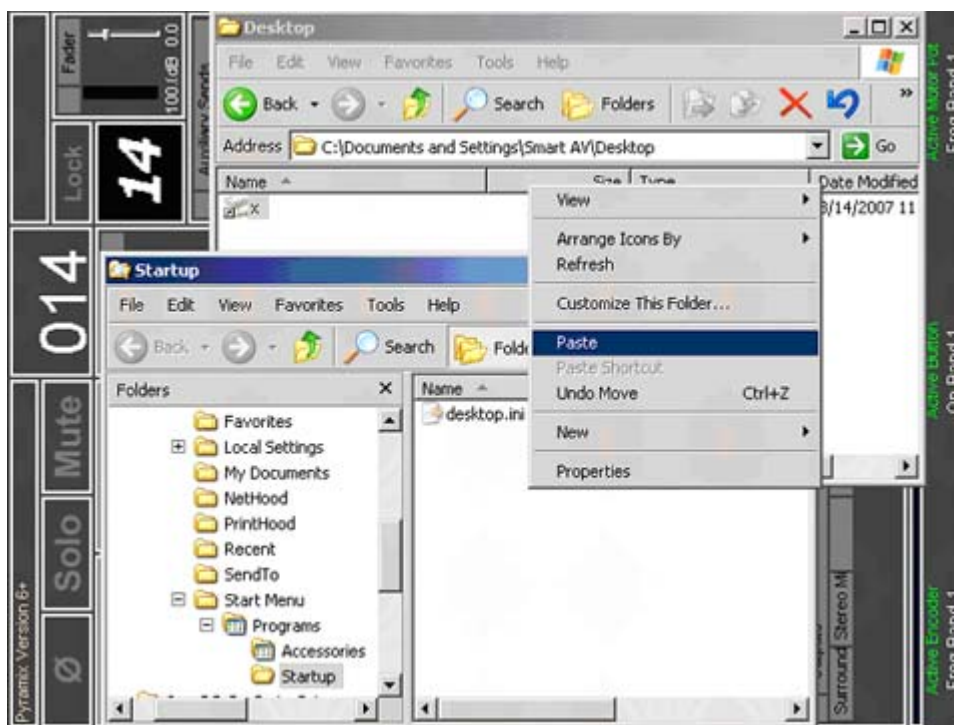
16. Select the shortcut you've just created and rename it **X** (the drive letter)
17. Re-Open the **Start Menu** (**Windows Key** or **Ctrl + Esc**). Click on **All Programs > Startup** then right-click and select **Explore**. This will open an **Explorer** window into which we need to move the shortcut.



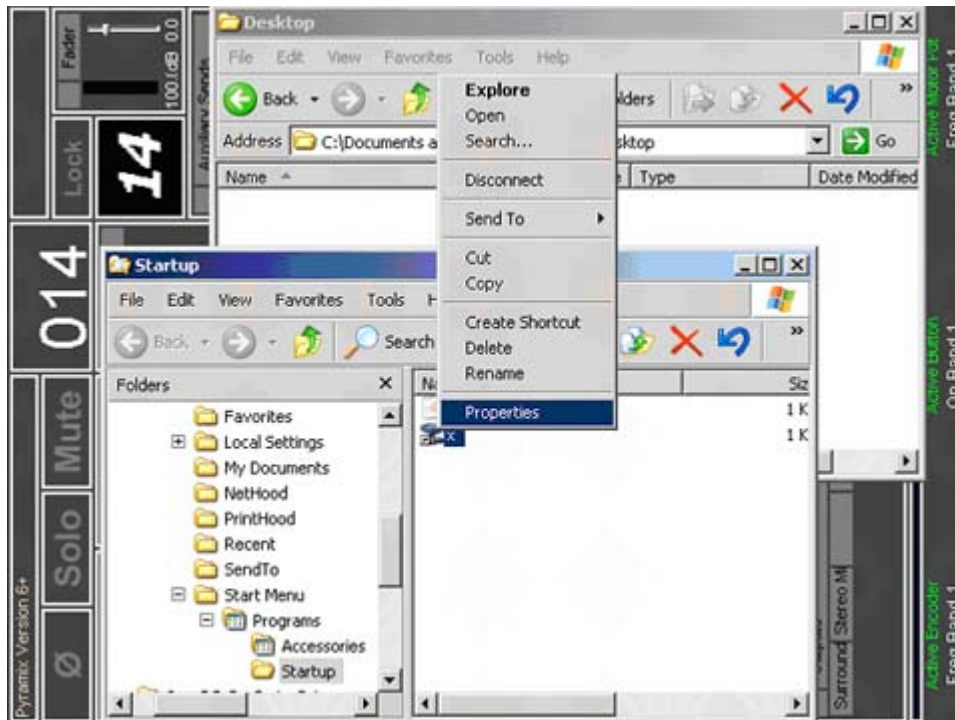
18. Use **Alt + Tab** to return to the **Desktop** Explorer window then select and **Cut** (**Edit > Cut** or **Ctrl + X**) to remove the shortcut.



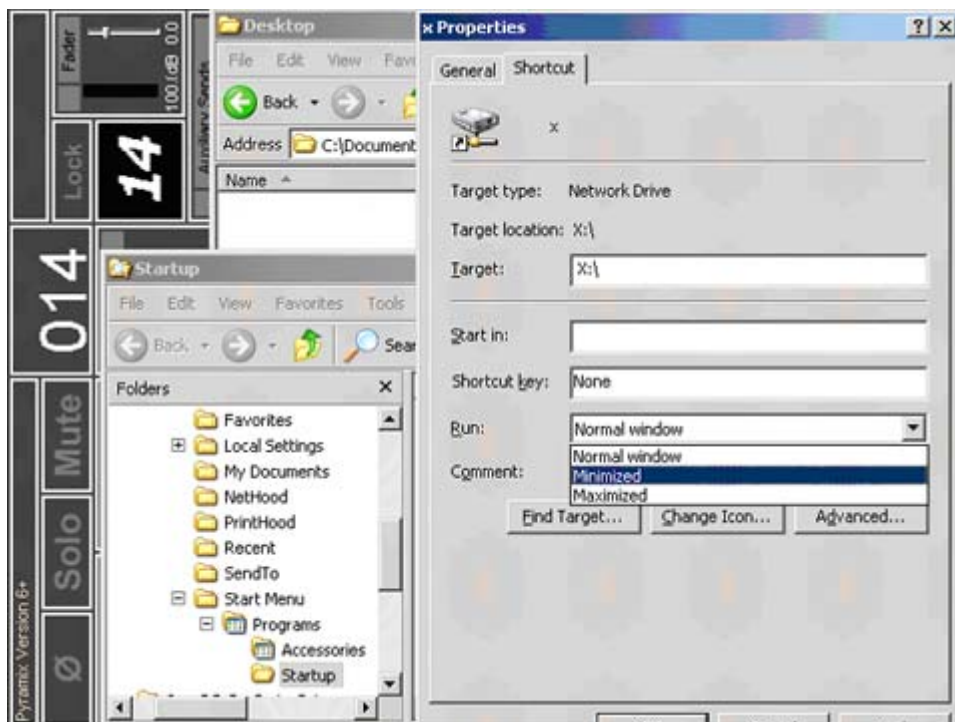
19. Use **Alt + Tab** to return to the **Startup** Explorer window and paste the shortcut into the **Startup** folder (**Edit > Paste** or **Ctrl + V**)



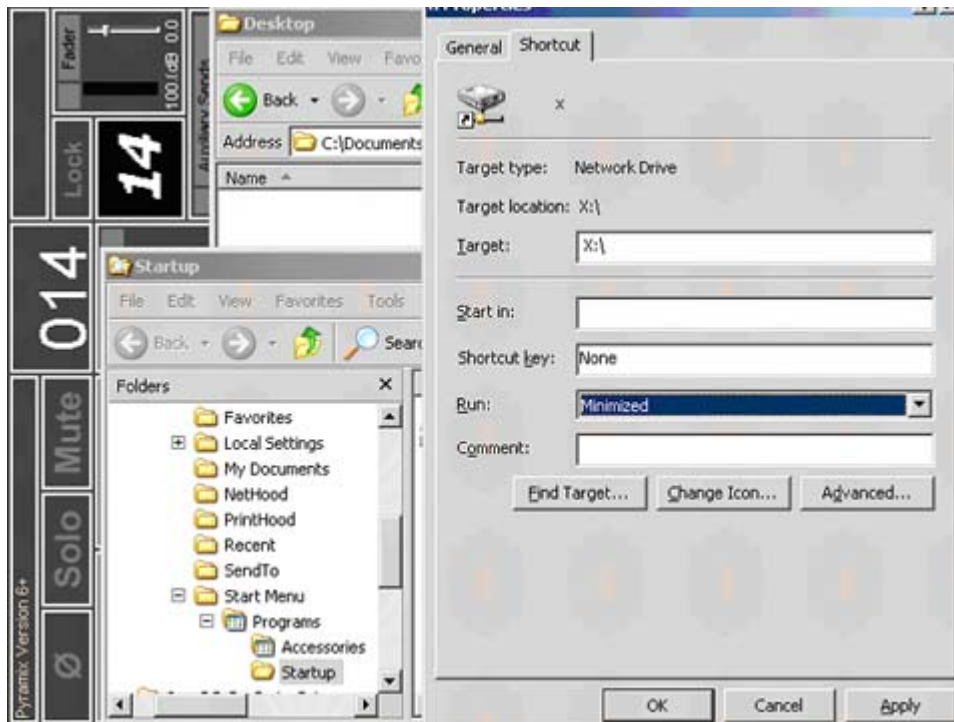
20. Right-click on the **X** shortcut you've just created and select, **Properties**



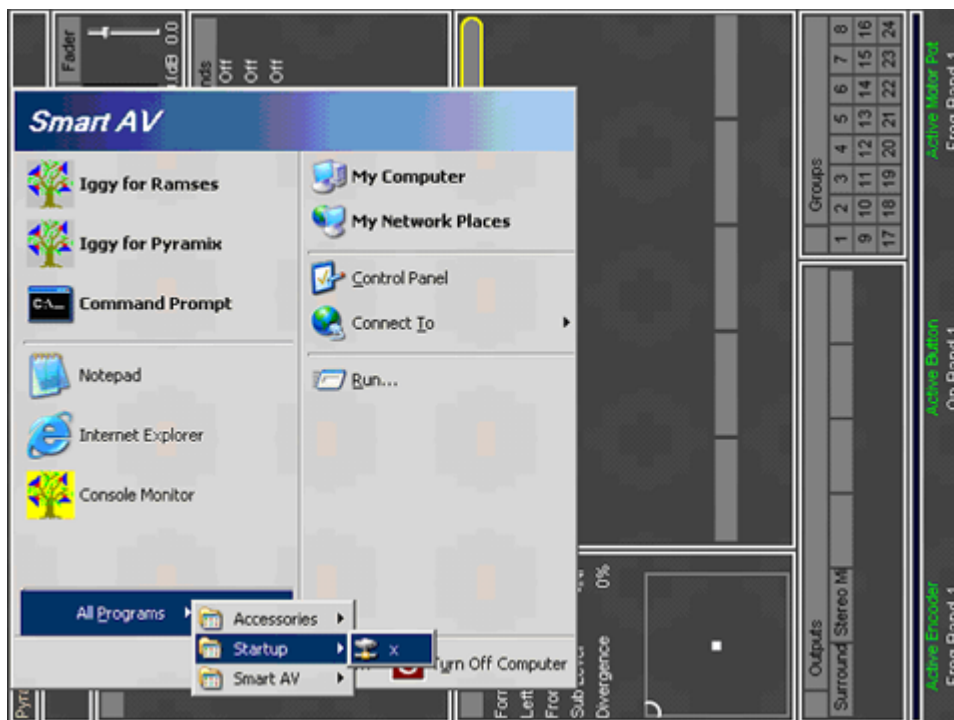
21. Select **Minimized** from the **Run** drop-down list.



22. Click on the **Apply** button followed by **OK** to exit.



23. Re-open the **Start** menu (**Windows** Key or **Ctrl + Esc**) and verify that the **X** shortcut is in the **Startup** folder.



24. Close all the open windows and **Shutdown** and **Restart** the Console. The mapped network drive will now be open in the background and you can undertake version and firmware imports via the network drive.
25. Finally, remember to hide the cursor again in the **SYSTEM > CONFIG** page.

Please refer to **Upgrade Procedure on page 7** for detailed instructions about installing new software Versions and firmware to the Ramses MSC Console.

Should you have any problems with carrying out this procedure, please consult your resident IT specialist.

Removing a Mapped Network Drive

To REMOVE the mapped network drive follow **Steps 1 to 10** above to open a **Command Prompt** Window and type the following:

net use x: /DELETE followed by Enter